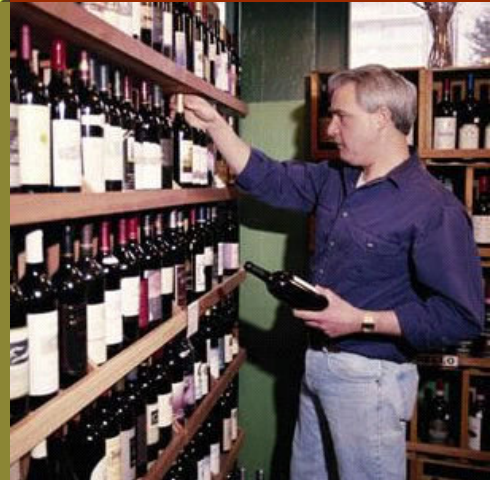
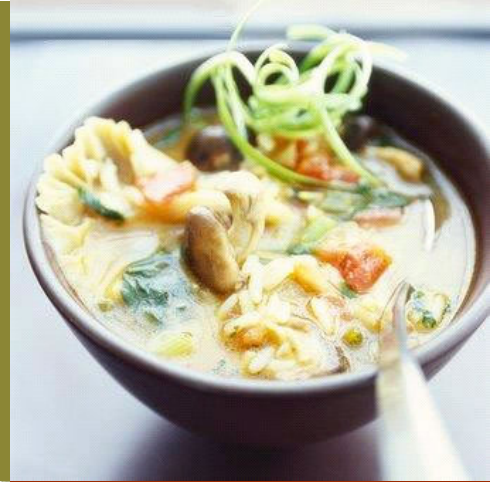


NEWCASTLE



An elite golf course, an expanding number of medical services and unique outdoor activities are just a few of the reasons Newcastle is both a destination for visitors and home to a growing number of residents.

The City is a symbol of the region's recent economic success and investing here is a rare opportunity to serve an ideal clientele.

Distinct, stylish buildings are being developed to match the community's authentic character. Current businesses are exploring ways to expand and there are additional opportunities for new businesses.

Newcastle is changing. Be a part of its evolving story and share in the success.

Rising demand*

- 1- mile population - 15,245
- 2- mile population - 31,142
- 3- mile population - 71,845
- 23% population increase in City since 2000

Income

- Median income is \$98,229
 - Compared to:
 - Bellevue - \$76,972
 - King County - \$65,414
- Some of the region's most exclusive homes
- Nearly half of households earn more than \$100,000

Visibility

- 30,000 vehicles per day at the City's business core

Regional Attractions

- **The Golf Club at Newcastle**
One of Puget Sound's most attractive golf courses
- **Cougar Mountain**
A collection of trails that serve as a destination for active Northwest residents and visitors
- **Newcastle Medical Pavilion**
An upscale medical office complex and part of a growing medical services sector

Other Statistics

- 68% have an advanced degree
- 64% of residents are married
- 74% own a home
- Median age is 39

*Source: SRC/ Demographics.now. One mile radius represents 1.3 miles.

13020 Newcastle Way
Newcastle, WA 98059
Phone: (425) 649 - 4444
Fax: (425) 649 - 4363
www.ci.newcastle.wa.us

